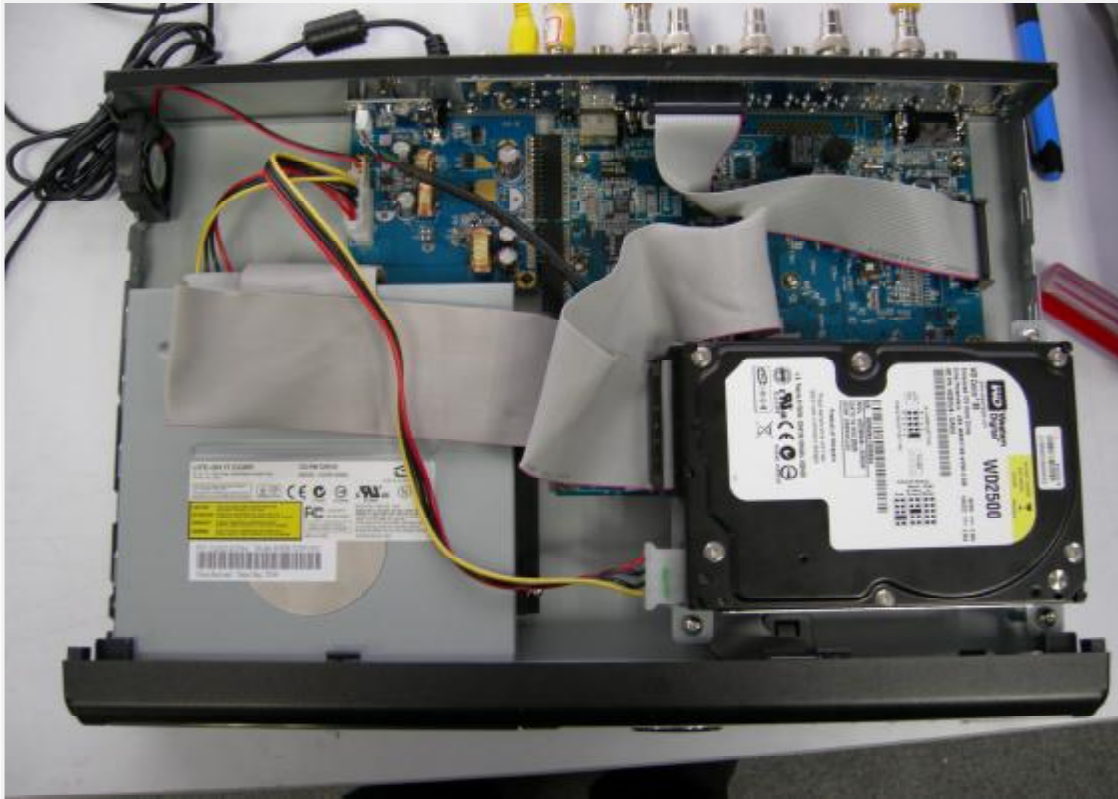


Hardware Reset Approach for CPD502

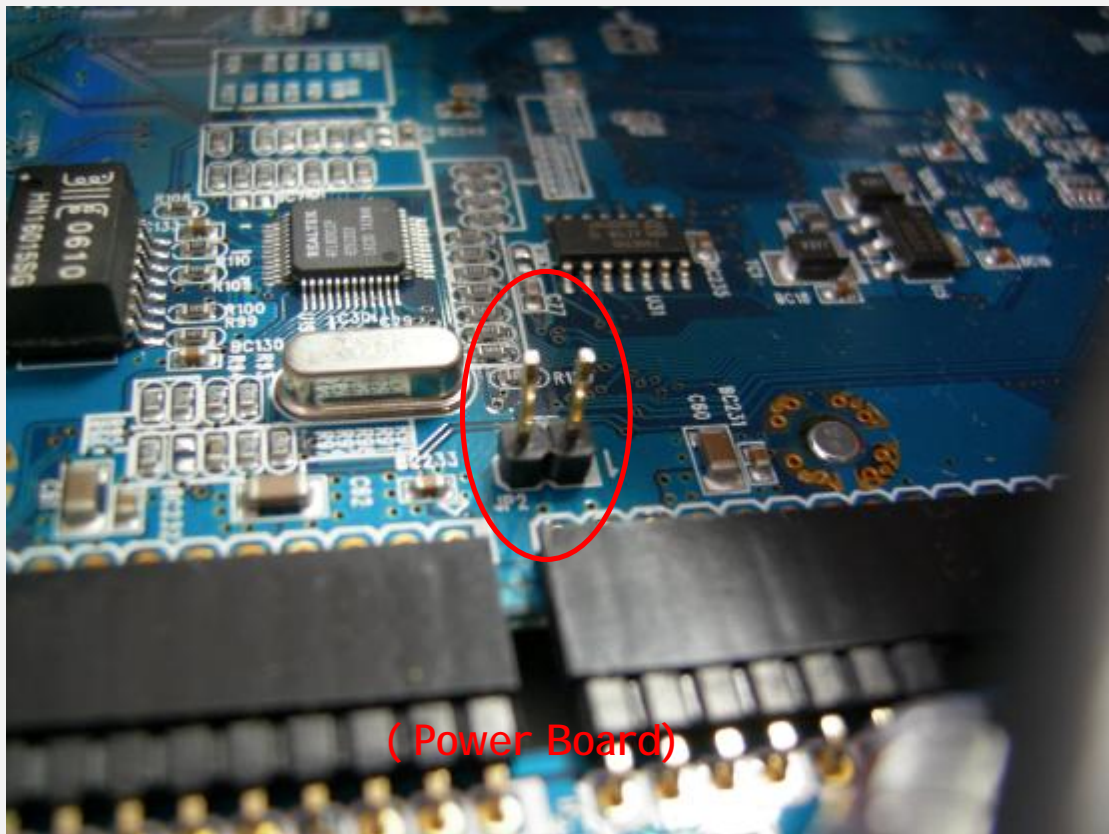
1. Turn off the power and dismount the cover from the unit



2. Find the Reset Point. (near rare board)



3. Take a close look at Reset Point (The 2 outstanding pins)



4. Connect the two jumps(pins) to form a short circuit. Then plug in the power and hold the short circuit for more than 10 seconds.

